

Understanding Drawing Issues

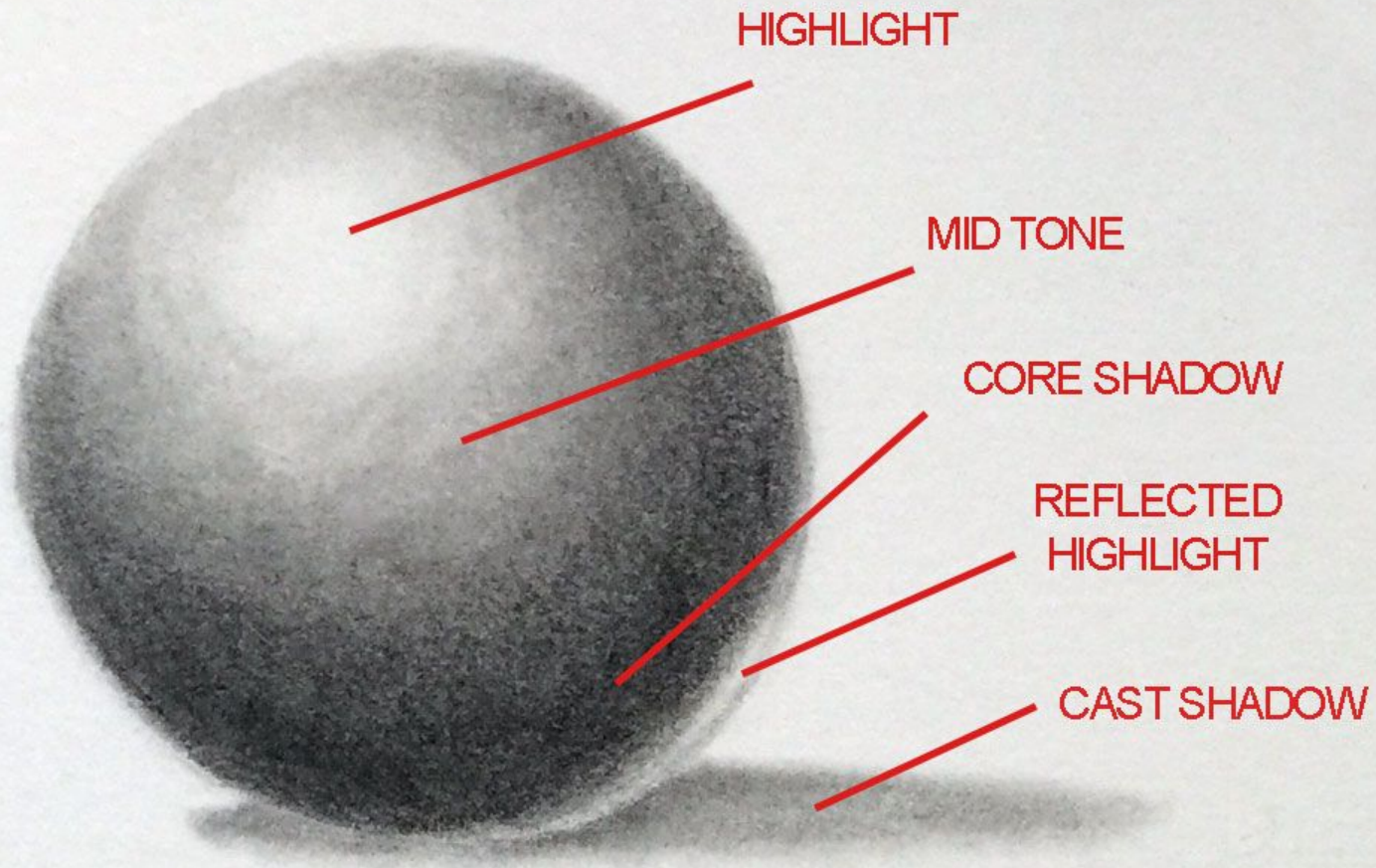
Photo credit: examples are from the college board site

Light & Shade

The farther a cast **shadow** is from the object the lighter and softer and less **defined** becomes its edges. Form **shadow**: A form **shadow** is the less **defined** dark side on an object not facing the **light** source. Form shadows are subtle shadows, but they are essential for creating the illusion of volume, mass and depth.

Important Vocabulary

- Tint: Highlights, light versions of a color.
- Shade: Darker areas, used for shadows.
- Mid-tone: Everything in between tints and shades .
- Contrast: this is created when opposites (white and black) are placed close to each other.
- Chiaroscuro: Italian term that literally means “Light dark”. A style of artwork where contrast is emphasized.



HIGHLIGHT

MID TONE

CORE SHADOW

REFLECTED
HIGHLIGHT

CAST SHADOW



**Matt Cook, CHATTANOOGA CHRISTIAN SCHOOL, Lookout
Mountain, GA**
Image 18 of 18

CLOSE X

SCHOOL

HAYFIELD SECONDARY SCHOOL
Lorton, VA
Marker, pen

5 X 7 WATERCOLOR AND GRAPHITE ON PAPER



2/12





16 X 20 LIQUID CHARCOAL ON PAPER



8/12





60 X 36 LIQUID CHARCOAL ON PAPER

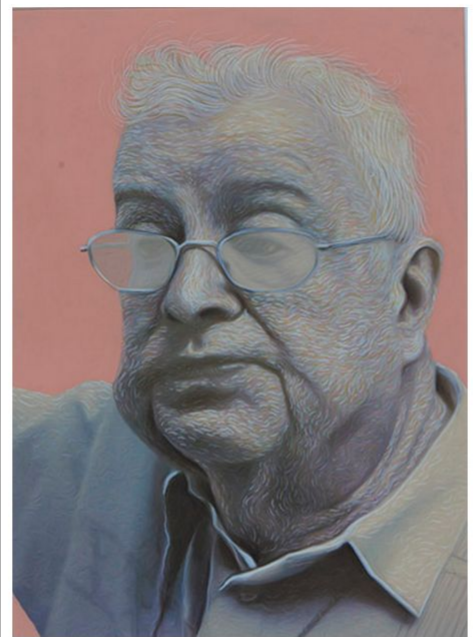


9/12



Rendering of form

Rendering in visual art and technical drawing means the process of formulating, adding color, shading, and texturing of an image. It can also be used to describe the quality of execution of that process



Grant Fryc, Northpoint Senior HS, NY –
Mixed media
Image 26 of 31

CLOSE X

Past AP Studio Art Exhibits

- [2014-15 AP Studio Art Exhibit](#)
- [2013-14 AP Studio Art Exhibit](#)
- [2012-13 AP Studio Art Exhibit](#)



Dayi Fu, Douglas Anderson School of Arts,
FL — Ink
Image 25 of 31

CLOSE X



Paola Parola, Valley Stream Central
HS, NY — Ballpoint pen
Image 29 of 31

CLOSE X

Composition

In the visual arts, pertaining to the arrangement of a work's visual elements and dynamic phenomena into a balanced and unified whole for an intended expressive purpose.



Maxwell Ryan Schwear, Joel Barlow High School ,
Redding, CT
Image 12 of 30

CLOSE X



Courtney Root, Alex W Dreyfoos School of the Arts, FL —
Mixed media (vine charcoal, watercolor, colored pencil,
ebony pencil, white charcoal, and chalk pastel)
Image 24 of 31

CLOSE X



Hudson Tsay, GEORGE WALTON COMPREHENSIVE HIGH
SCHOOL, Marietta, GA —Graphite, acrylic, marker
Image 29 of 34

CLOSE X



Byron Kim, MT. VIEW HIGH SCHOOL, Mountain View, CA — Ballpoint pen, micron pen, watercolor,
Image 32 of 34

CLOSE X

12 X 15 OIL PAINT ON CANVAS



12/12



Surface Manipulation

Creating a variety of textures.

Working with different types of surfaces and incorporating them into your work.



Sydney Hahn, OAK RIDGE HIGH SCHOOL, Conroe, TX — Pencil,
watercolor
Image 28 of 34

CLOSE X



Samuel Hersh, PLANO SENIOR HIGH SCHOOL, Plano, TX —
Mixed media
Image 27 of 34

CLOSE X



Rafaella Fontenelle, Design and Architecture Sr. High, FL —
Mixed Media (Acrylics, Hot Glue, Thread, Oil Pastel, Text
Transfer, and Watercolor)
Image 30 of 31

CLOSE X



12 X 18 CUT PAPER AND THREAD
ON PAPER



5/12



7 X 12 THREAD AND PAPER ON LINEN CANVAS



8/12



light and shade (images 1, 2, 6, and 9), rendering of form (images 3, 5, 4

Illusion of Depth

can be **defined** as the **illusion** of space or **depth**(3 dimensions) produced on a flat, 2 dimensional surfaces, also called the picture plane. *Perspective is a mechanical device for obtaining the **illusion** of 3 dimensions

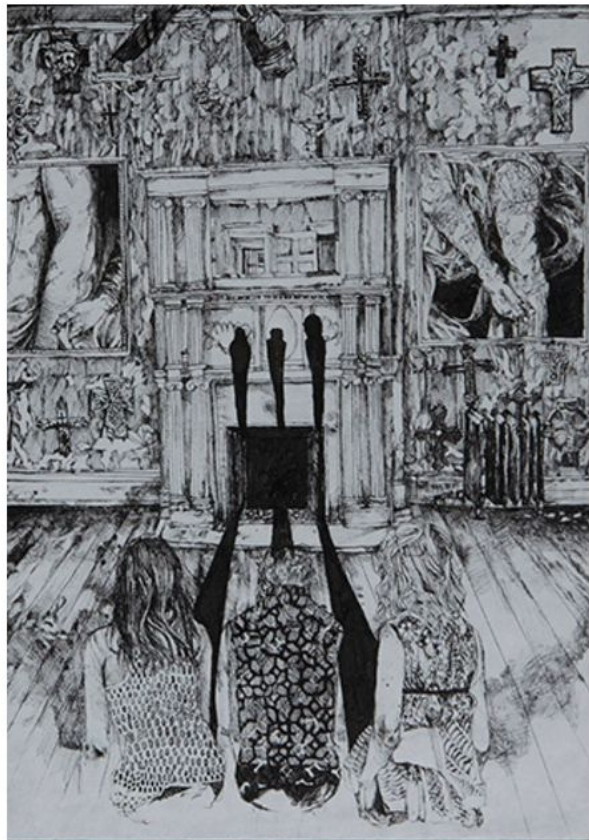
1. Overlapping
2. Shading
3. Size and scale
4. Perspective
5. Value changes
6. Position
7. Including, background, middle ground, and foreground

Types of perspective

- 1 and 2 point perspective
- foreshortening
-

Value

- Atmospheric perspective: as objects move farther away they become lighter
- Objects in the distance have less detail
- As objects move closer to the front/ foreground they become stronger in value
- As objects move closer to the foreground they become sharper and more detailed.



Savanna Judd, Lewis and Clark HS, WA —

Ink

Image 31 of 31

CLOSE X

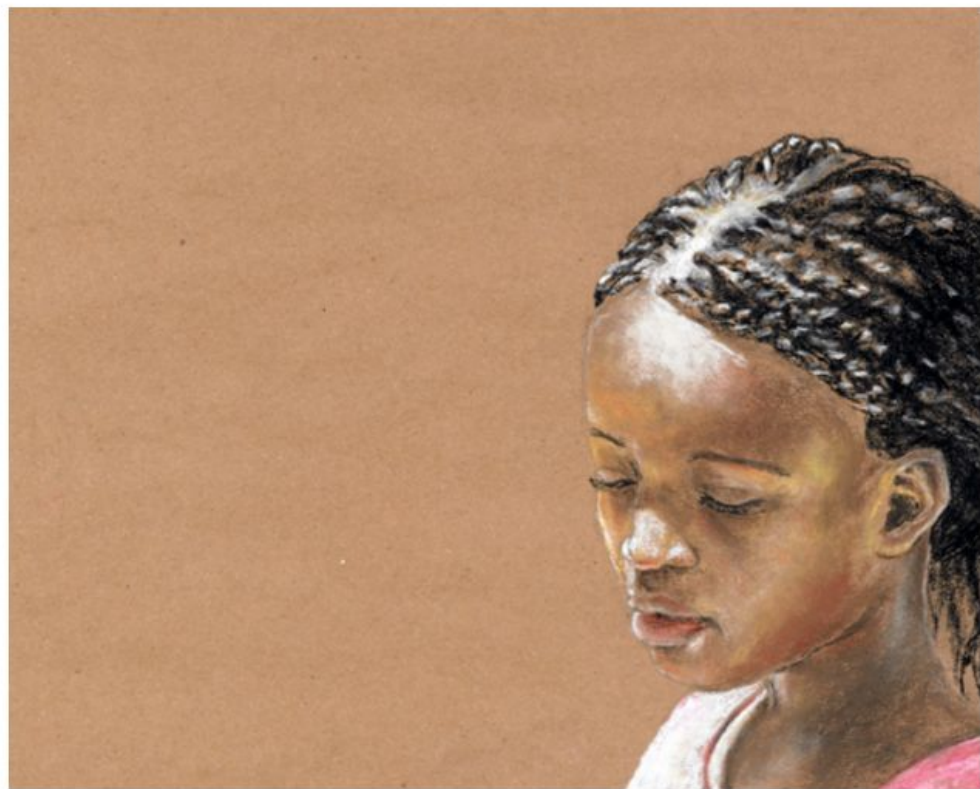


Henry Grant, TOWSON HIGH SCHOOL, Towson, MD — Acrylic
Image 34 of 34



Ellie Blackman, BOOKER T. WASHINGTON
HIGH SCHOOL FOR THE PERFORMING AND
VISUAL ARTS, Dallas, TX — Charcoal
Image 20 of 33

CLOSE X



Kamryn Jones, Weber High School , Liberty, UT
Image 10 of 30

CLOSE X

Mark Making

Mark making is a term used to describe the different lines, patterns, and textures we create in an artwork. It applies to any **art material(s)** we use on any surface(s), not only paint on canvas or pencil on paper.



Adam Amram, Chattahooche High School ,
Alpharetta, GA
Image 26 of 30

CLOSE X



Jeffery Hampshire, JORDAN HIGH SCHOOL, Sandy, UT —
Acrylic
Image 31 of 34

CLOSE X



18 X 25 PEN AND INK ON PAPER



1/12

